

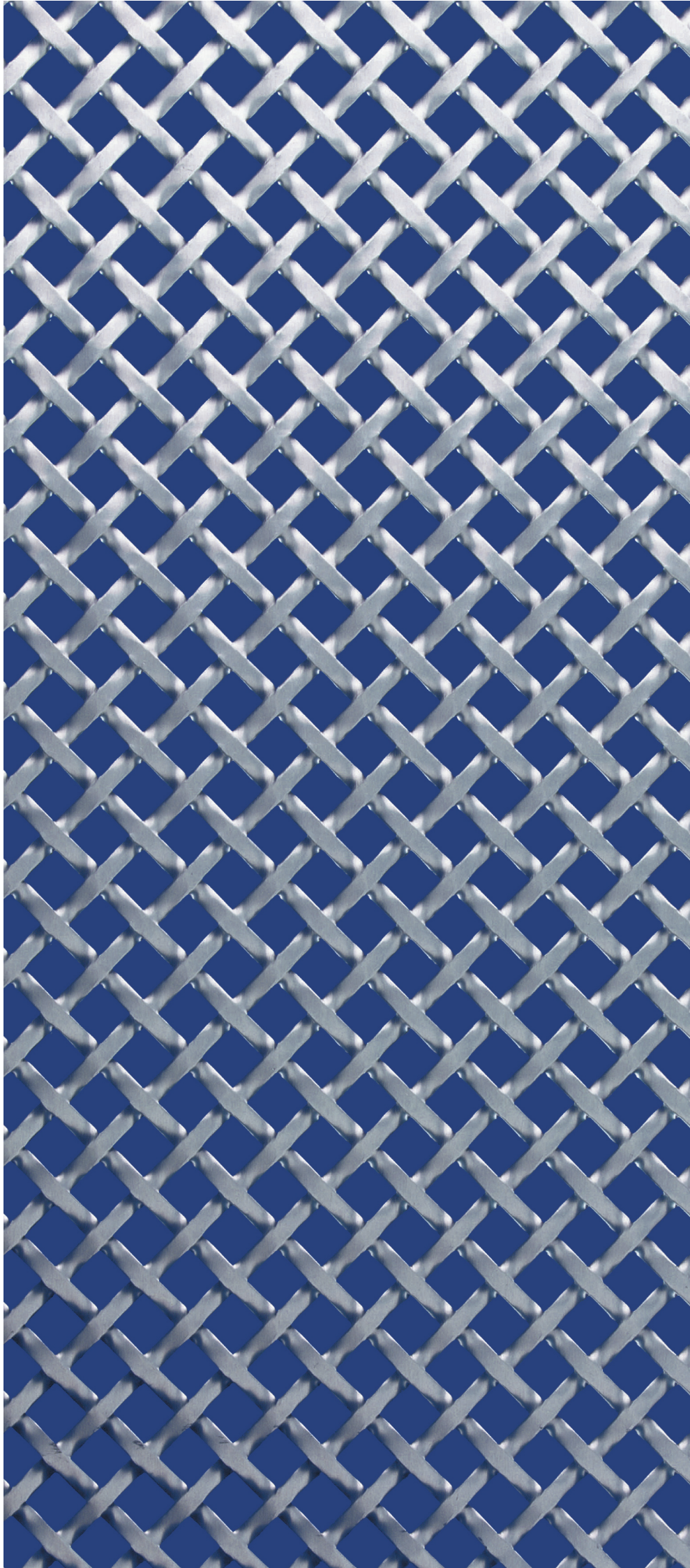
## **DANICO BRASS LTD**

**31-35 Winchester Road  
Swiss Cottage  
London NW3 3NR**

**tel: 020 7483 4477**

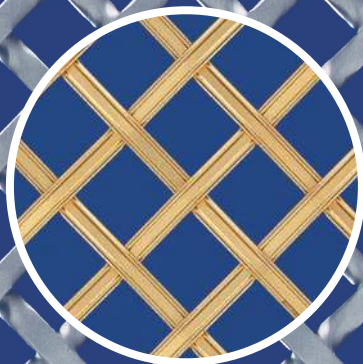
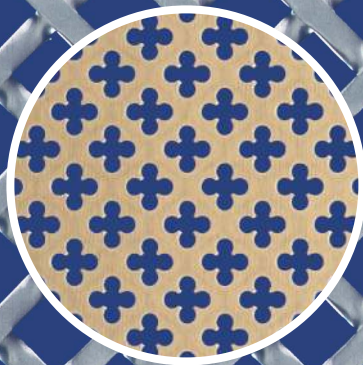
**fax: 020 7722 7992**

email: [sales@danico.co.uk](mailto:sales@danico.co.uk)



the  
**DANICO**

decorative  
**grilles**  
catalogue





# Welcome to the Danico Catalogue of Decorative Grilles

We are an independent family, owned company established in 1979 with over three generations of experience in the Ironmongery and Hardware trade. Our showroom and head office is based in Swiss Cottage, North London. We are able to advise and supply a complete range of Architectural Ironmongery (door hardware, locks, builders hardware, electrical accessories, taps & bathroom accessories) sourced from all over the world, to offer you the widest possible choice of high quality, value for money, products.

Our clients include discerning home owners, architects, builders, interior designers, hotels and corporations who are building new, or refurbishing existing properties. We can supply any product anywhere in the world.

This 24 page catalogue endeavours to show the full range of our Decorative Grilles.

All grilles have been photographed full size to enable you to visualise the product in its setting. Other finishes are available to order. There are some styles that we are unable to show, so if you require a grille that is not featured in this publication, please contact us.

We also have the facilities to manufacture " special " items, made to clients specification and designs.

Grilles have been grouped in separate sections according to their type and material, with a general description of each group shown on the contents page opposite.

On the last page we show a small selection of some of our other products namely Door Hardware and Electrical Accessories. A separate 100 page colour catalogue for Architectural Ironmongery is available on request.

Our experienced and friendly staff will be delighted to welcome you to our showroom or to help and advise you on the telephone.

We hope you find our catalogue informative and easy to use.



Annelise and Ashok Daryanani

First published 2000.

All rights reserved. No part of this publication may be reproduced, stored in a retrieval system, or transmitted in any form or by any means, mechanical or otherwise, without prior permission in writing of the copyright owners.

Published by Danico Brass Limited.

Printed by Norwich Colour Print Limited, Norwich, UK.

All products are offered for sale only under the terms of our Standard Conditions of Sale. Danico pursues a policy of constantly updating and reviewing the product range and the company reserves the right to alter specification or availability without notice.

**Danico Brass Limited,**  
31 – 35 Winchester Road Swiss Cottage,  
London NW3 3NR  
Tel: 020 7483 4477 Fax: 020 7722 7992  
email: sales@danico.co.uk



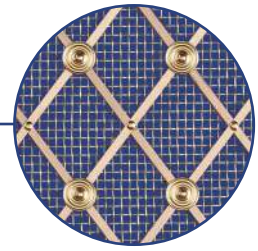
# contents & product information

## brass regency grilles

Brass Regency Grilles are highly decorative and have been used for many years on radiator covers and fine quality joinery. Every grille is handmade from 3mm solid brass square section which is machined and half lapped. Each joint is then drilled and secured with a brass pin. You can have decorative rosettes on each or alternate junctions. Usually a fine (1/16") brass mesh backing is fitted, but it is also available with a larger (1/8") brass mesh or with no mesh.

The standard finish is Polished Brass Lacquered.

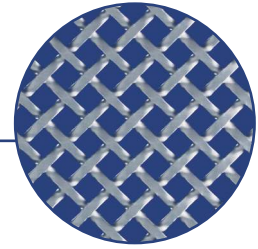
Regency grilles are always made to measure and are available in 3 diamond sizes:  
Small - each diamond is 51 x 38 mm ( h x w ) Medium - each diamond is 72 x 55 mm  
Large - each diamond is 99 x 74 mm. Regency Grilles are custom-made to order only and we require exact sizes. This product is not uni-directional hence the height and width must be specified. We do not recommend cutting this grille on site.



pages 2, 3, 4, 5, 6, 7.

## aluminium perforated grilles

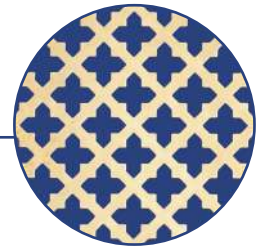
Aluminium Perforated Sheet Grilles are the most popular way to cover large expanses of radiator panels and screens. They are very economical, light-weight, rigid and therefore easy to handle and easy to cut. Available in sheets 2000 x 1000 mm they can be used in either direction as the patterns are uni-directional. Wastage is minimal. The standard finish is either Gold or Silver anodized. They may be painted by the customer to match individual colour schemes. All sheets are available from stock. Panels can be cut to your sizes in a few days.



pages 8, 9, 10, 11, 12.

## brass perforated grilles

Brass Perforated Sheet Grilles are available in sheets 1800 x 900mm (6 x 3 feet) or cut to your sizes. The standard finish for this product is Polished Brass Un-Lacquered.

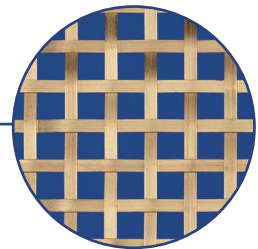


page 13.

## brass woven grilles

Brass Woven Grilles are traditional and have been in use for many years. These are handmade by weaving individual strips of crimped (Plain or Reeded ) brass wire into either a Diamond or Square pattern. They are fairly strong and rigid especially the smaller apertures when fitted with a fine brass mesh. With 3 wire widths, 3mm (1/8") 5mm (3/16") and 6mm ( 1/4") and 5 aperture sizes over 120 variations are possible ! All grilles can be supplied with or without fitted fine brass mesh.

The standard finish is Polished Brass Lacquered. It is also available in Bronze finish. (see page 20 for colour) Woven grilles are custom-made to order only and we require the exact size. We do not recommend cutting this grille on site.



pages 14, 15, 16, 17

## stainless steel woven grilles

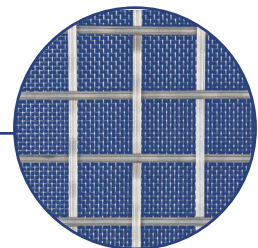
Stainless Steel Woven Grilles are handmade by weaving individual strips of crimped S/Steel wire into either a Diamond or Square pattern.

The 3 mm (1/8") wire is Plain on one side and Reeded on the other side.

5 aperture sizes are available with or without fine S/Steel mesh.

The standard finish is Self Colour Stainless Steel.

Made to order to your specific size.



pages 18, 19

## miscellaneous

Brass frames made to suit your specification. A small selection of our other products.

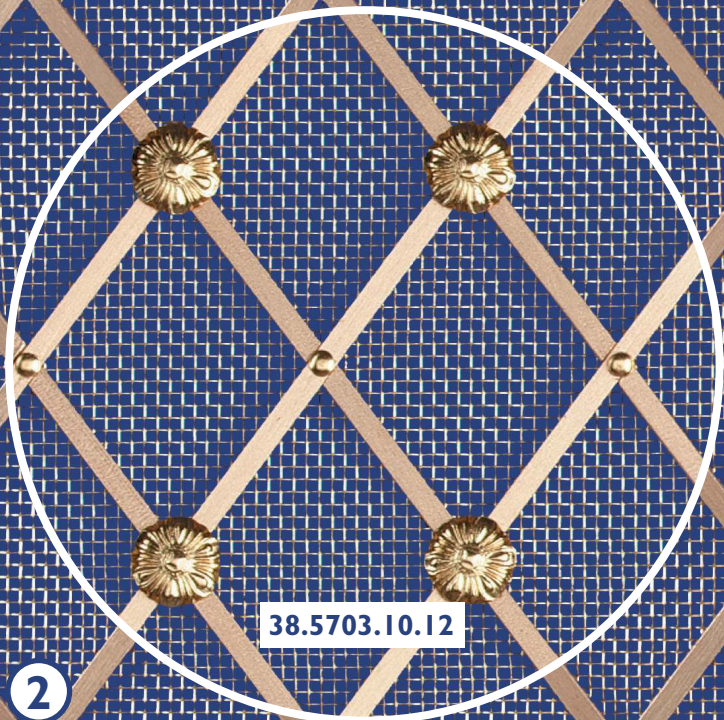


pages 20, 21

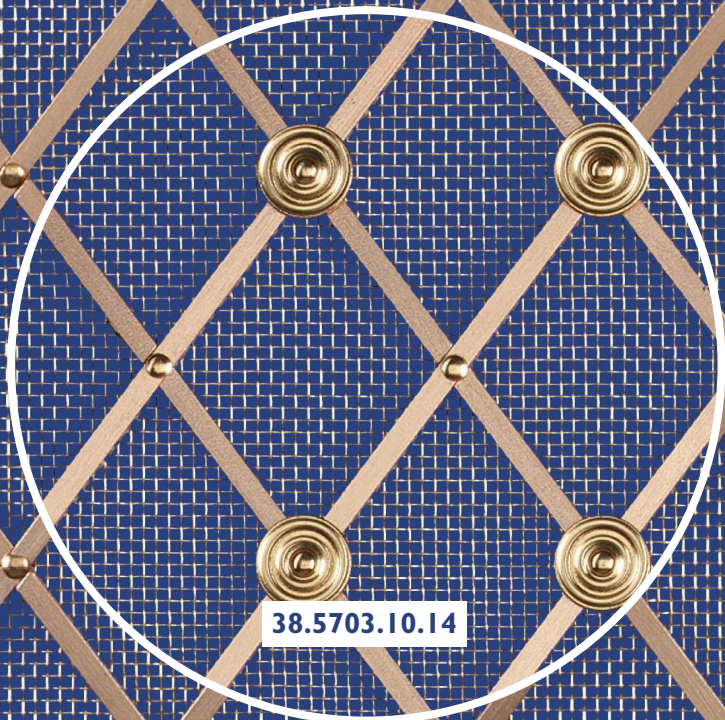
**DANICO**  
020 7483 4477



38.5703.10.11



38.5703.10.12



38.5703.10.14



brass regency ■  
grilles

small diamond  
polished brass

**without mesh**

- 38.5703.10.01 all rivets
- 38.5703.10.02 hit & miss floral rosettes
- 38.5703.10.03 all floral rosettes
- 38.5703.10.04 hit & miss reeded rosettes
- 38.5703.10.05 all reeded rosettes

**with fine mesh**

- 38.5703.10.11 all rivets
- 38.5703.10.12 hit & miss floral rosettes
- 38.5703.10.13 all floral rosettes
- 38.5703.10.14 hit & miss reeded rosettes
- 38.5703.10.15 all reeded rosettes

**with large mesh**

- 38.5703.10.21 all rivets
- 38.5703.10.22 hit & miss floral rosettes
- 38.5703.10.23 all floral rosettes
- 38.5703.10.24 hit & miss reeded rosettes
- 38.5703.10.25 all reeded rosettes

all grilles shown actual size

38.5703.10.24

**DANICO**  
020 7483 4477

38.5704.10.12

38.5704.10.11

38.5704.10.01

38.5704.10.14

brass reGENCY ■  
grilles

medium diamond  
polished brass

**without mesh**

- 38.5704.10.01 all rivets
- 38.5704.10.02 hit & miss floral rosettes
- 38.5704.10.03 all floral rosettes
- 38.5704.10.04 hit & miss reeded rosettes
- 38.5704.10.05 all reeded rosettes

**with fine mesh**

- 38.5704.10.11 all rivets
- 38.5704.10.12 hit & miss floral rosettes
- 38.5704.10.13 all floral rosettes
- 38.5704.10.14 hit & miss reeded rosettes
- 38.5704.10.15 all reeded rosettes

**with large mesh**

- 38.5704.10.21 all rivets
- 38.5704.10.22 hit & miss floral rosettes
- 38.5704.10.23 all floral rosettes
- 38.5704.10.24 hit & miss reeded rosettes
- 38.5704.10.25 all reeded rosettes

all grilles shown actual size



38.5704.10.04

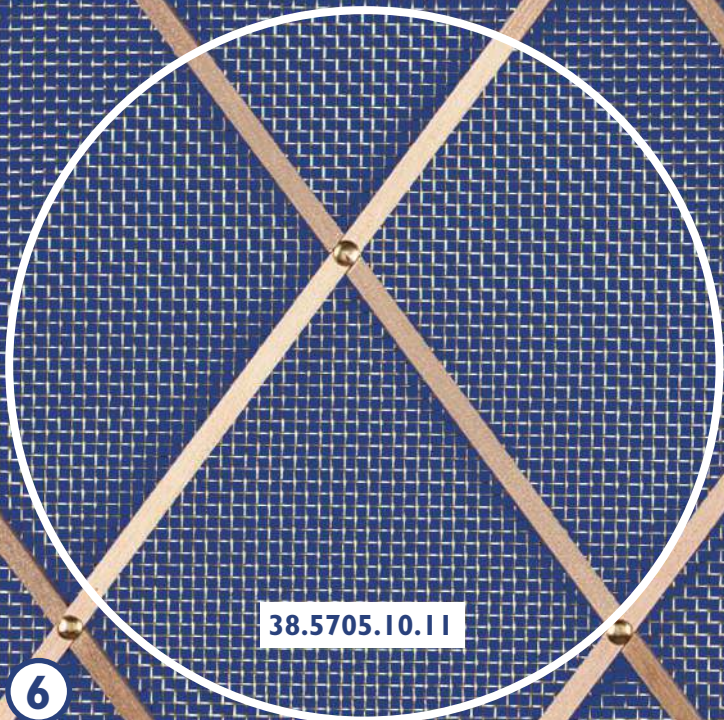
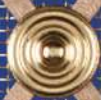


38.5704.10.22

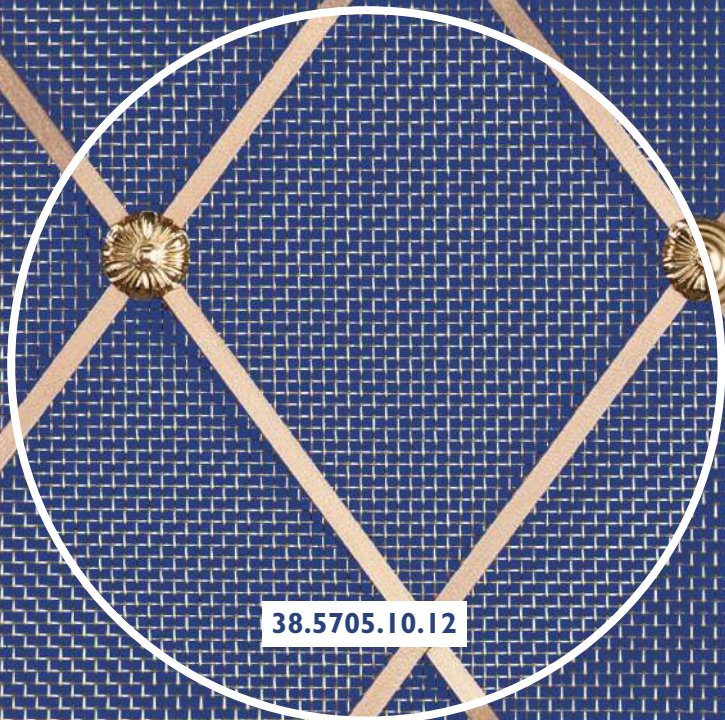
**DANICO**  
020 7483 4477



38.5705.10.14



38.5705.10.11



38.5705.10.12

brass regency ■  
grilles

large diamond  
polished brass

**without mesh**

- 38.5705.10.01 all rivets
- 38.5705.10.02 hit & miss floral rosettes
- 38.5705.10.03 all floral rosettes
- 38.5705.10.04 hit & miss reeded rosettes
- 38.5705.10.05 all reeded rosettes

**with fine mesh**

- 38.5705.10.11 all rivets
- 38.5705.10.12 hit & miss floral rosettes
- 38.5705.10.13 all floral rosettes
- 38.5705.10.14 hit & miss reeded rosettes
- 38.5705.10.15 all reeded rosettes

**with large mesh**

- 38.5705.10.21 all rivets
- 38.5705.10.22 hit & miss floral rosettes
- 38.5705.10.23 all floral rosettes
- 38.5705.10.24 hit & miss reeded rosettes
- 38.5705.10.25 all reeded rosettes

all grilles shown actual size

38.5705.10.24

38.5705.10.22

**DANICO**  
020 7483 4477

aluminium  
perforated

# grilles

small-club

38.5680.55

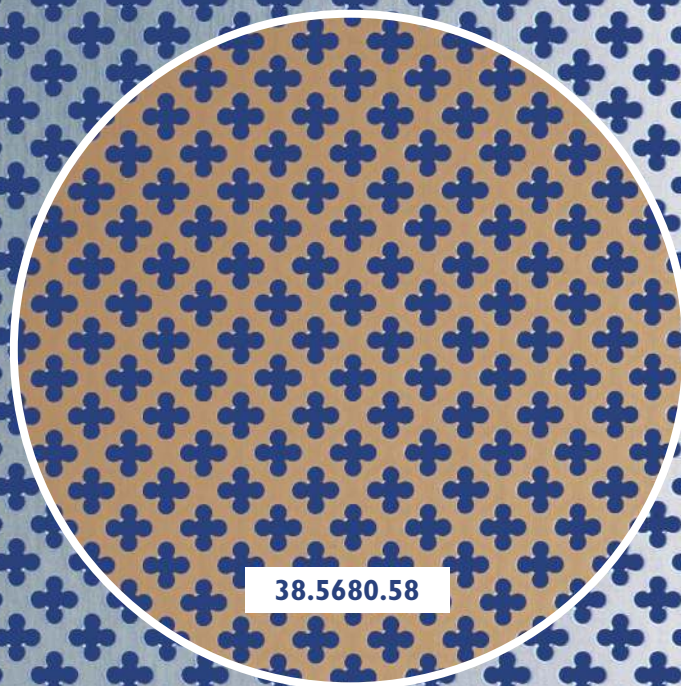
## small-club

38.5680.55 silver anodized

38.5680.58 gold anodized

sheet size 2000mm x 1000mm

all grilles shown actual size



38.5680.58

**DANICO**  
020 7483 4477

38.5681.58

aluminium  
perforated

grilles

large-club

**large-club grille**

38.5681.58 gold anodized

38.5681.55 silver anodized

Sheet size 2000mm x 1000mm

all grilles shown actual size

38.5681.55

**DANICO**  
020 7483 4477

9

aluminium  
perforated ■  
**grilles**  
square-hole

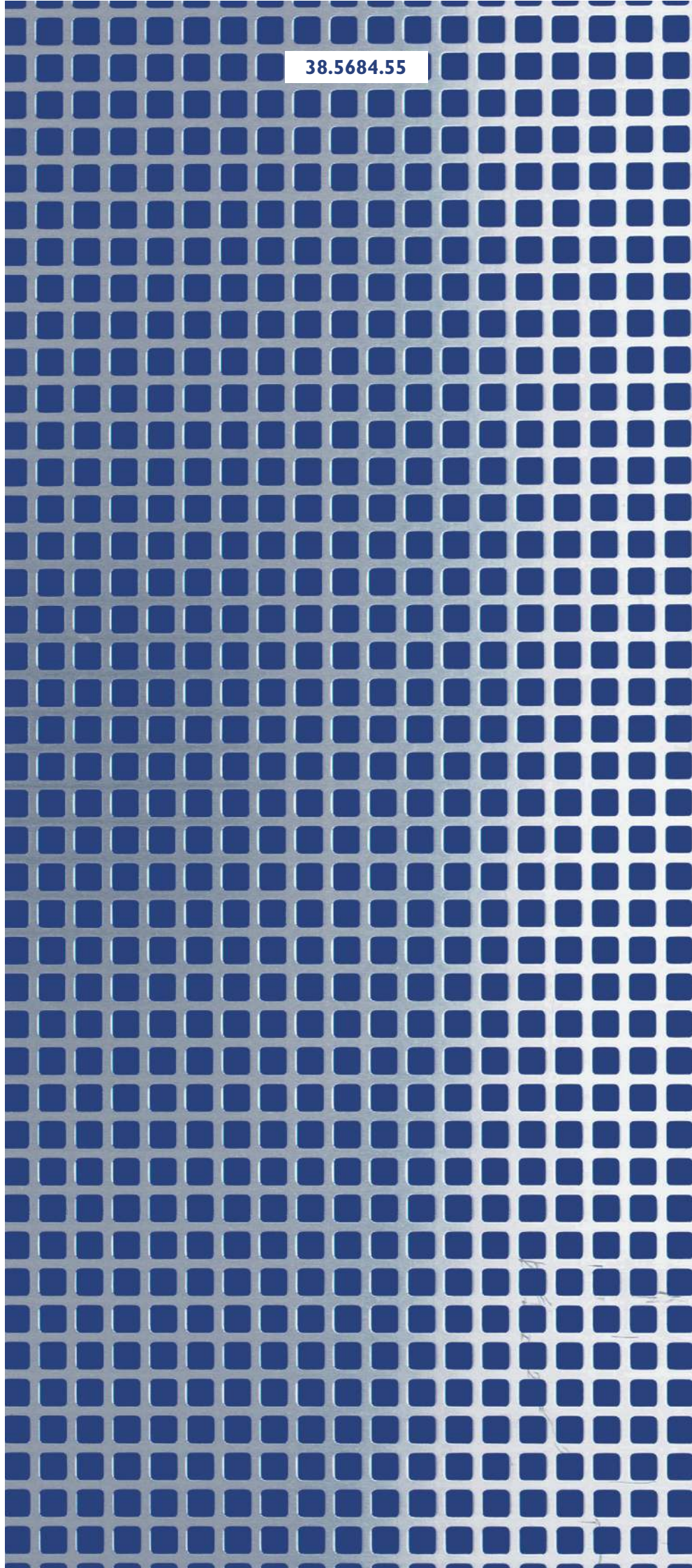
38.5684.55

**square-hole grille**

38.5684.55 silver anodized  
Sheet size 2000mm x 1000mm

all grilles shown actual size

**DANICO**  
020 7483 4477





38.5685.58

aluminium  
perforated ■  
grilles

imitation weave

**imitation weave grille**

38.5685.58 gold anodized

38.5685.55 silver anodized

Sheet size 2000mm x 1000mm

all grilles shown actual size



38.5685.55

**DANICO**  
020 7483 4477



aluminium  
perforated

# grilles

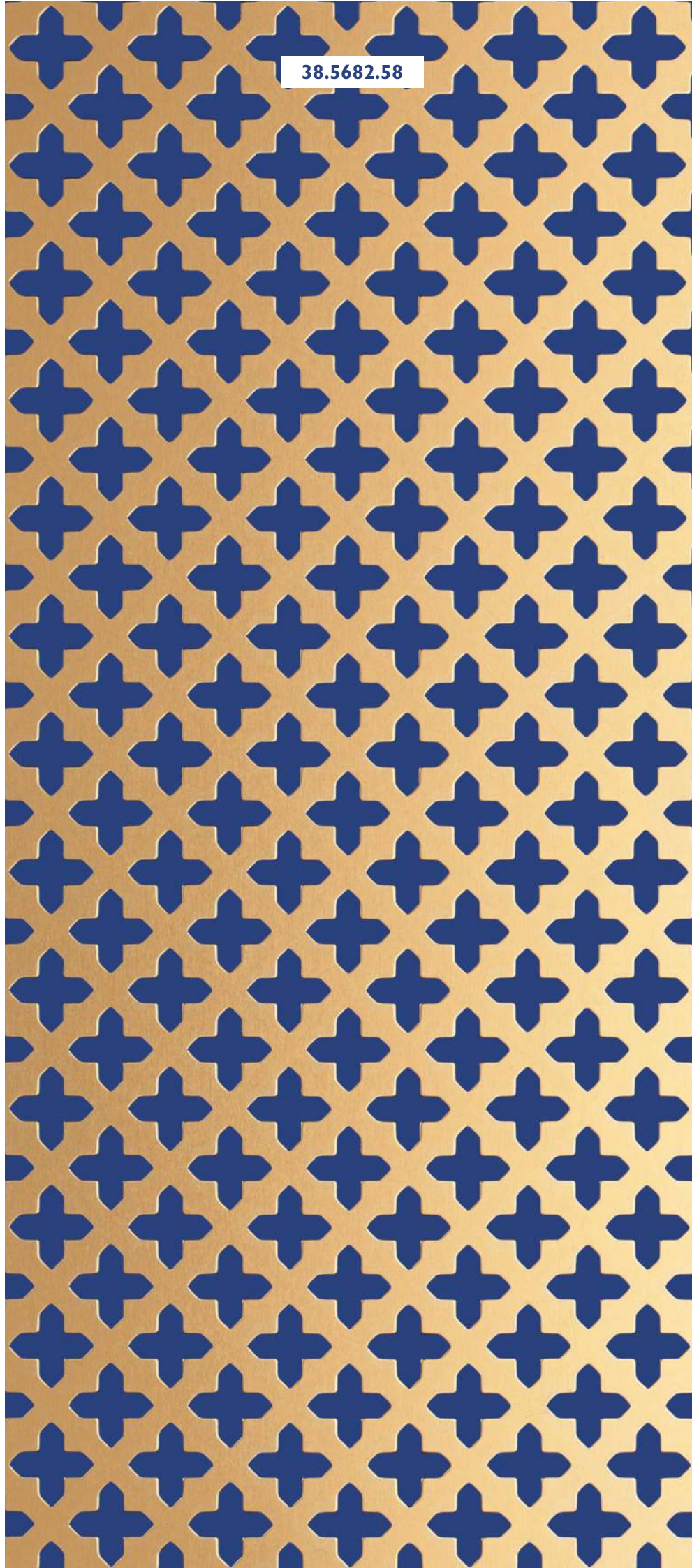
sword pattern

38.5682.58

## sword pattern grille

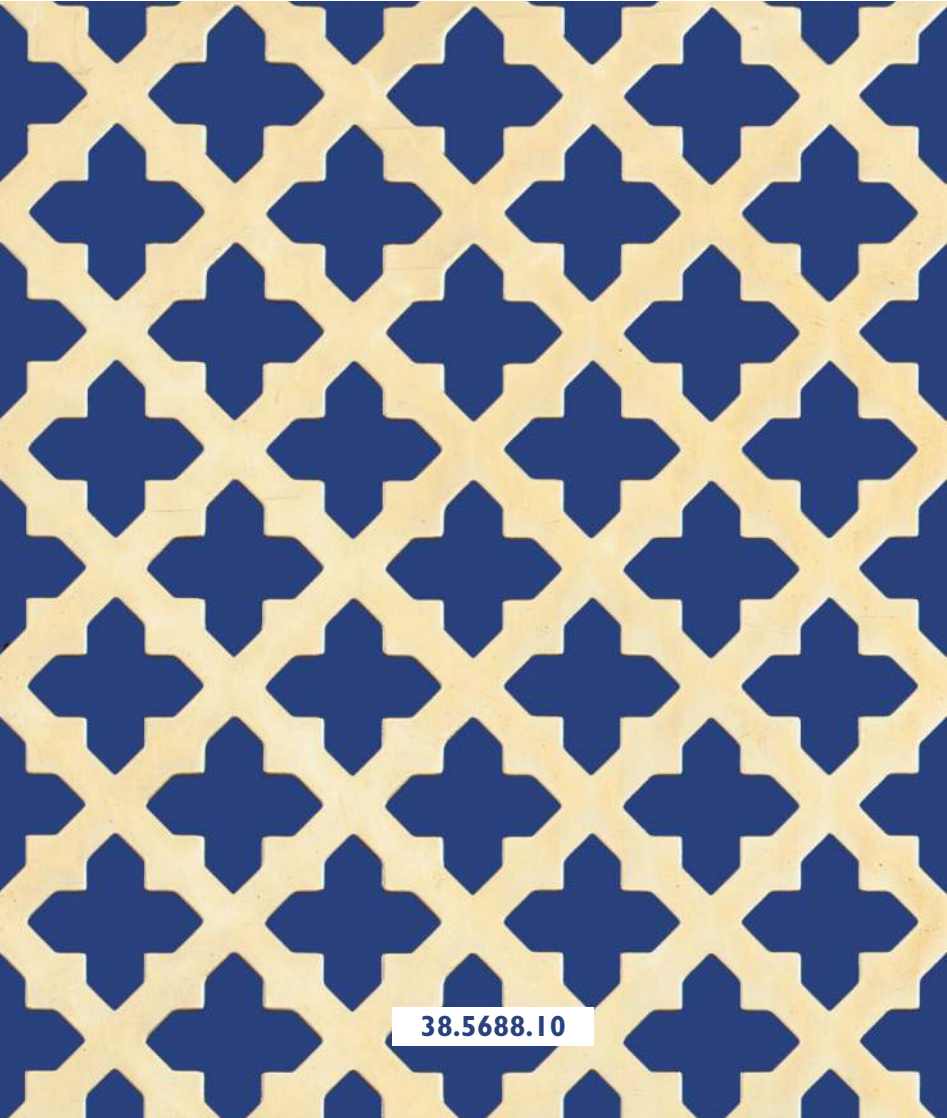
38.5682.58 gold anodized  
Sheet size 2000mm x 1000mm

all grilles shown actual size



**DANICO**  
020 7483 4477





38.5688.10

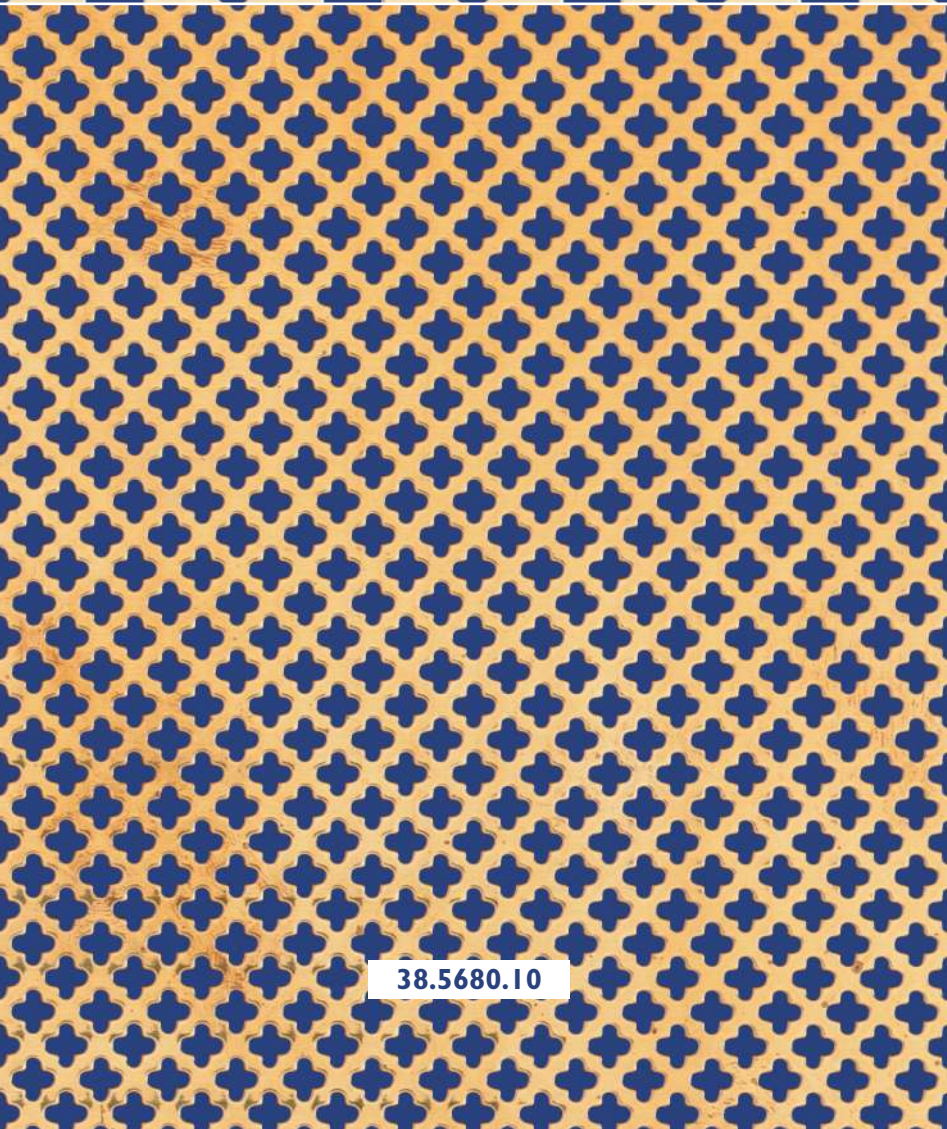
brass  
perforated ■  
**grilles**

**large cross**

**large cross grille**

38.5688.10 polished brass  
Sheet size 1800mm x 900mm

all grilles shown actual size



38.5680.10

**small club**

**small club grille**

38.5680.10 polished brass  
sheet size 1800mm x 900mm

all grilles shown actual size

**DANICO**  
020 7483 4477





# brass woven grilles

diamond weave

## 3mm ( $\frac{1}{8}$ ") plain wire

diamond aperture

38.1308.10	8mm	$\frac{5}{16}$ "
38.1310.10	10mm	$\frac{3}{8}$ "
38.1312.10	12mm	$\frac{1}{2}$ "
38.1320.10	19mm	$\frac{3}{4}$ "
38.1325.10	25mm	1"

## 5mm ( $\frac{3}{16}$ ") plain wire

diamond aperture

38.1508.10	8mm	$\frac{5}{16}$ "
38.1510.10	10mm	$\frac{3}{8}$ "
38.1512.10	12mm	$\frac{1}{2}$ "
38.1520.10	19mm	$\frac{3}{4}$ "
38.1525.10	25mm	1"

## 6mm ( $\frac{1}{4}$ ") plain wire

diamond aperture

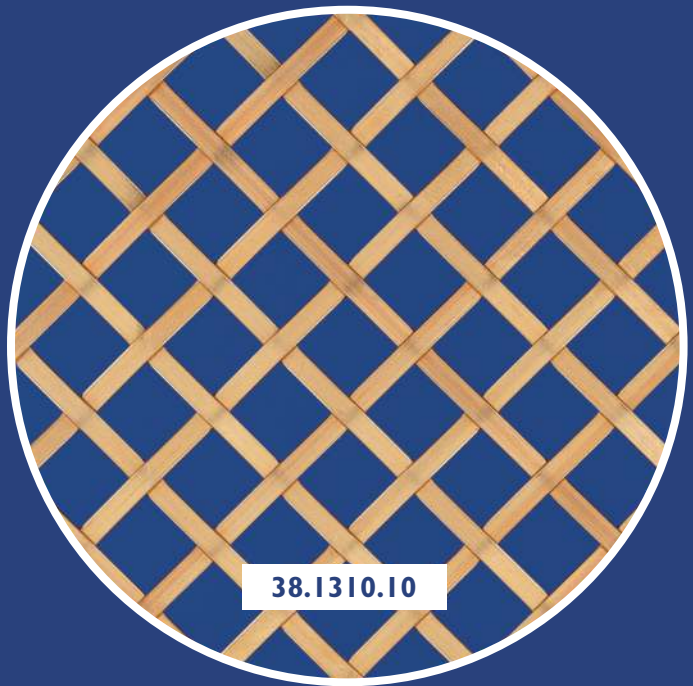
38.1608.10	8mm	$\frac{5}{16}$ "
38.1610.10	10mm	$\frac{3}{8}$ "
38.1612.10	12mm	$\frac{1}{2}$ "
38.1620.10	19mm	$\frac{3}{4}$ "
38.1625.10	25mm	1"

all above grilles are available  
with or without fine or large mesh.

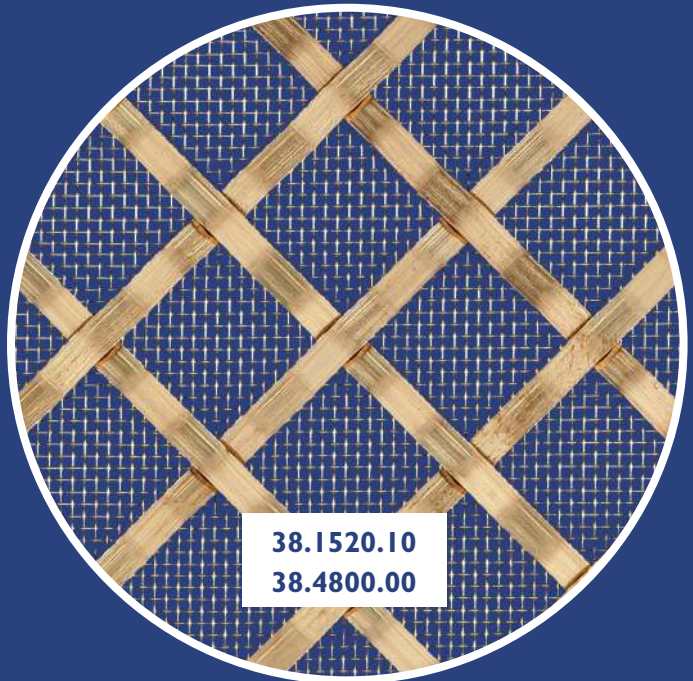
**38.4800.00** fine mesh  
attached to woven grille.

all grilles shown actual size

also available in Bronze or Nickel finish.



38.1310.10



38.1520.10  
38.4800.00

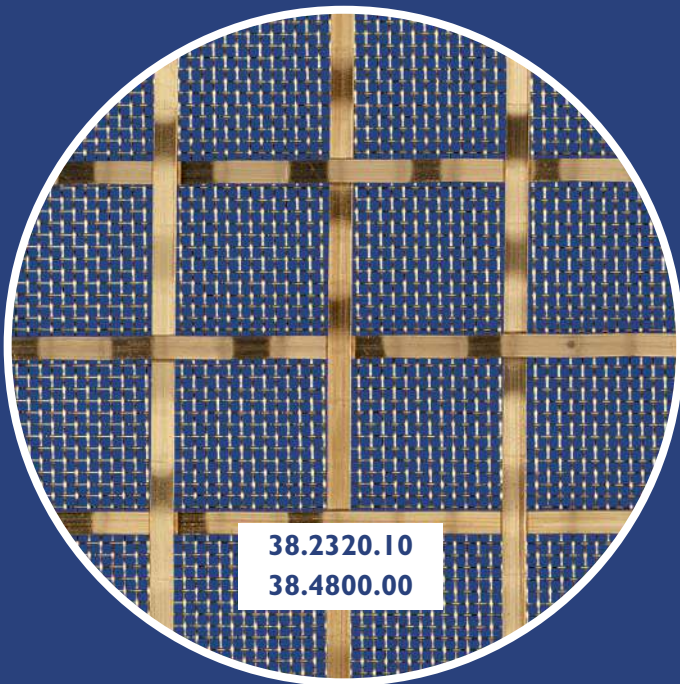


38.1612.10

**DANICO**  
020 7483 4477

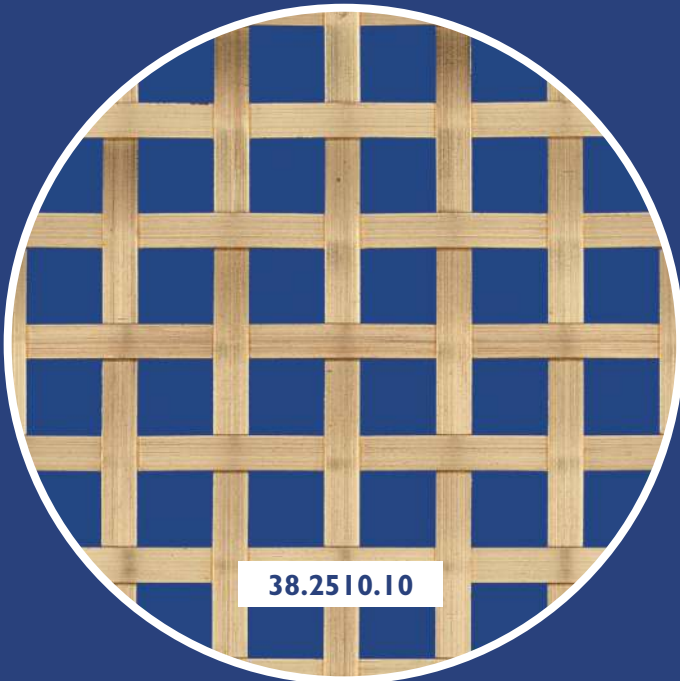
# brass woven ■ grilles

square weave

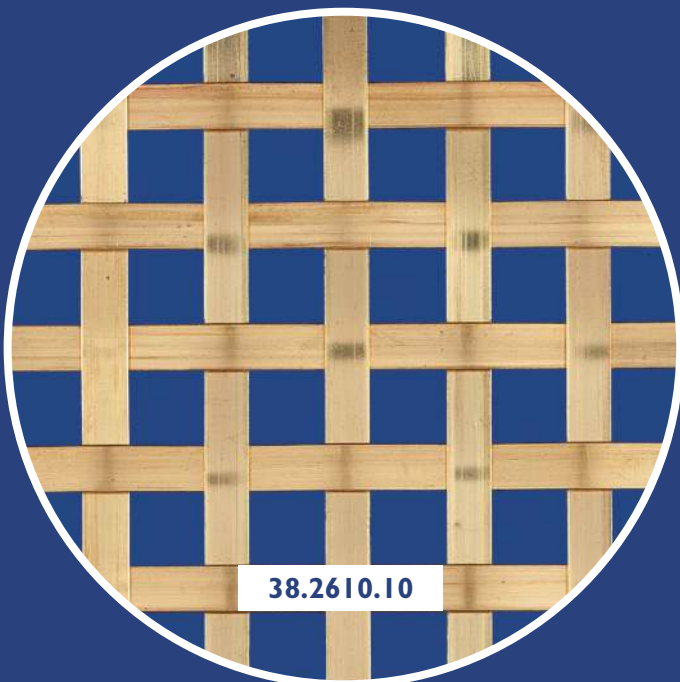


38.2320.10

38.4800.00



38.2510.10



38.2610.10

## 3mm (1/8") plain wire

square aperture

38.2308.10	8mm	5/16"
38.2310.10	10mm	3/8"
38.2312.10	12mm	1/2"
38.2320.10	19mm	3/4"
38.2325.10	25mm	1"

## 5mm (3/16") plain wire

square aperture

38.2508.10	8mm	5/16"
38.2510.10	10mm	3/8"
38.2512.10	12mm	1/2"
38.2520.10	19mm	3/4"
38.2525.10	25mm	1"

## 6mm (1/4") plain wire

square aperture

38.2608.10	8mm	5/16"
38.2610.10	10mm	3/8"
38.2612.10	12mm	1/2"
38.2620.10	19mm	3/4"
38.2625.10	25mm	1"

**all above grilles are available  
with or without fine or large mesh.**

**38.4800.00 fine mesh  
attached to woven grille.**

all grilles shown actual size

also available in Bronze or Nickel finish.

**DANICO**  
020 7483 4477

# brass woven grilles

diamond weave

## 3mm ( $\frac{1}{8}$ " ) reeded wire

diamond aperture

38.3308.10	8mm	$\frac{5}{16}$ "
38.3310.10	10mm	$\frac{3}{8}$ "
38.3312.10	12mm	$\frac{1}{2}$ "
38.3320.10	19mm	$\frac{3}{4}$ "

## 5mm ( $\frac{3}{16}$ " ) reeded wire

diamond aperture

38.3508.10	8mm	$\frac{5}{16}$ "
38.3510.10	10mm	$\frac{3}{8}$ "
38.3512.10	12mm	$\frac{1}{2}$ "
38.3520.10	19mm	$\frac{3}{4}$ "
38.3525.10	25mm	1"

## 6mm ( $\frac{1}{4}$ " ) reeded wire

diamond aperture

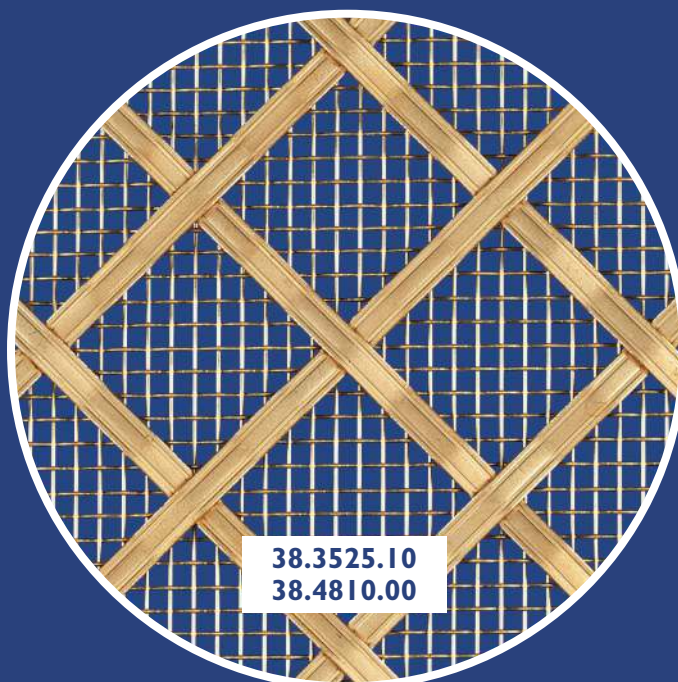
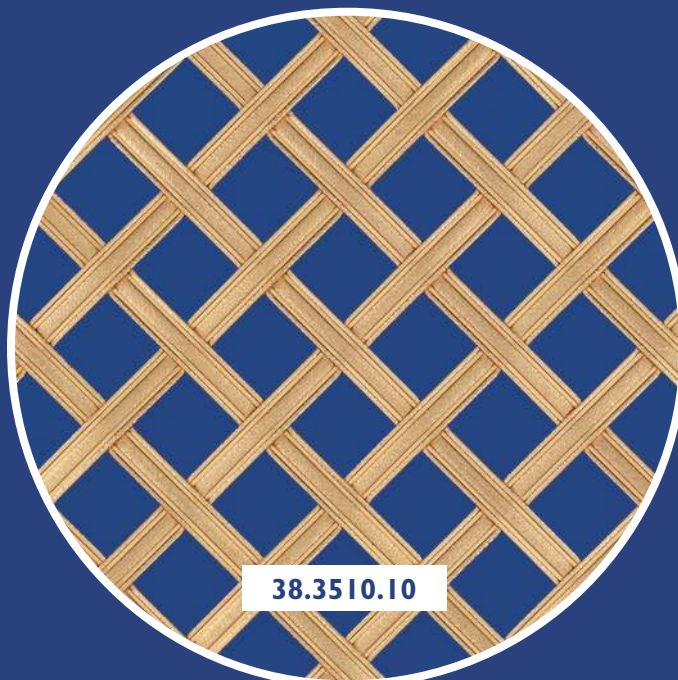
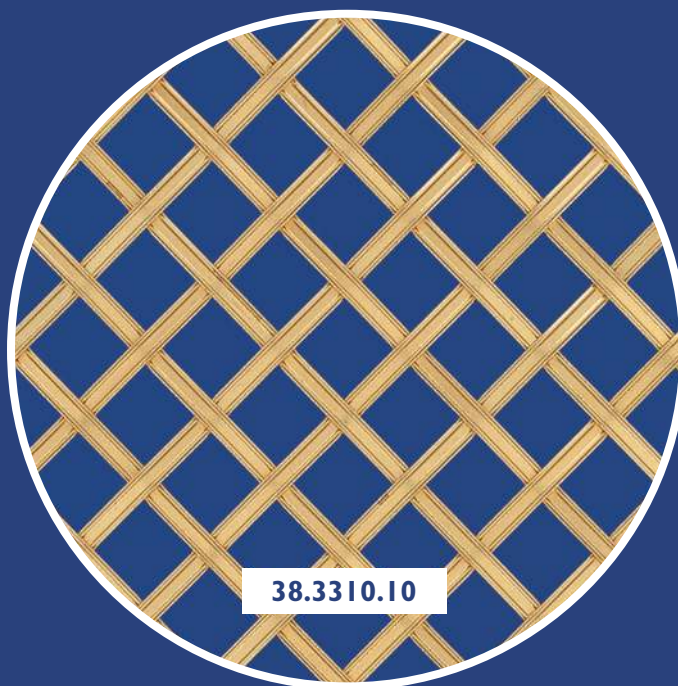
38.3608.10	8mm	$\frac{5}{16}$ "
38.3610.10	10mm	$\frac{3}{8}$ "
38.3612.10	12mm	$\frac{1}{2}$ "
38.3620.10	19mm	$\frac{3}{4}$ "
38.3625.10	25mm	1"

all above grilles are available  
with or without fine or large mesh.

**38.4810.00 large mesh**  
attached to woven grille.

all grilles shown actual size

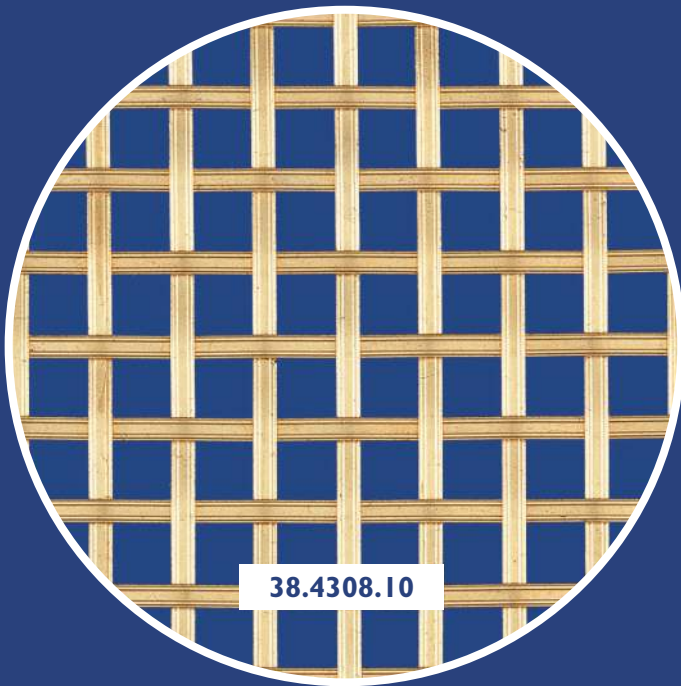
also available in Bronze or Nickel finish.



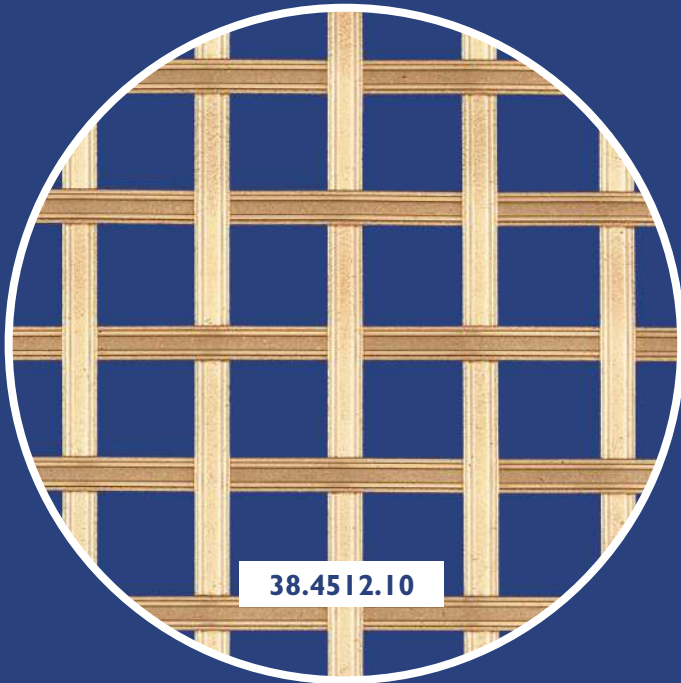
**DANICO**  
020 7483 4477

brass woven ■  
grilles

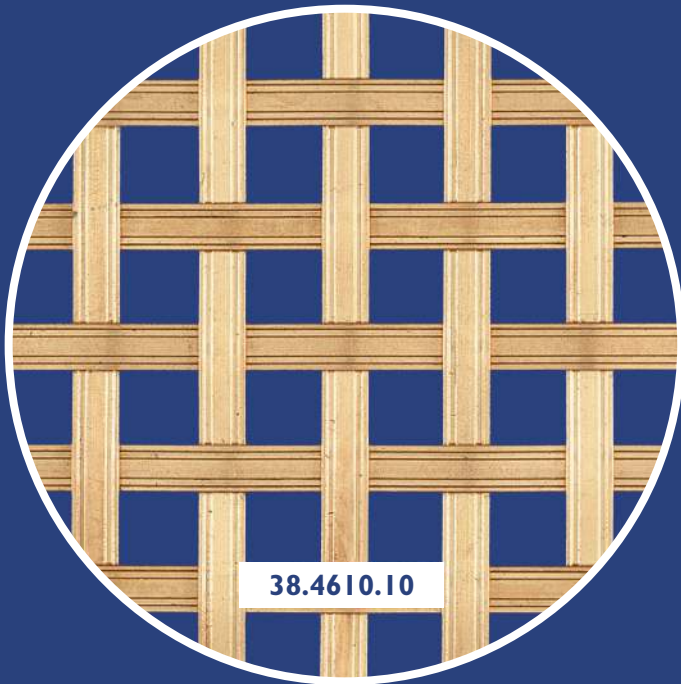
square weave



38.4308.10



38.4512.10



38.4610.10

**3mm ( $\frac{1}{8}$ " ) reeded wire**

square aperture

38.4308.10	8mm	$\frac{5}{16}$ "
38.4310.10	10mm	$\frac{3}{8}$ "
38.4312.10	12mm	$\frac{1}{2}$ "
38.4320.10	19mm	$\frac{3}{4}$ "
38.4325.10	25mm	1"

**5mm ( $\frac{3}{16}$ " ) reeded wire**

square aperture

38.4508.10	8mm	$\frac{5}{16}$ "
38.4510.10	10mm	$\frac{3}{8}$ "
38.4512.10	12mm	$\frac{1}{2}$ "
38.4520.10	19mm	$\frac{3}{4}$ "
38.4525.10	25mm	1"

**6mm ( $\frac{1}{4}$ " ) reeded wire**

square aperture

38.4608.10	8mm	$\frac{5}{16}$ "
38.4610.10	10mm	$\frac{3}{8}$ "
38.4612.10	12mm	$\frac{1}{2}$ "
38.4620.10	19mm	$\frac{3}{4}$ "
38.4625.10	25mm	1"

**all above grilles are available with or without fine or large mesh.**

all grilles shown actual size

also available in Bronze or Nickel finish.

**DANICO**  
020 7483 4477

stainless steel  
woven  
**grilles**

**diamond weave**

**3mm (1/8") wire**

plain one side reeded other side

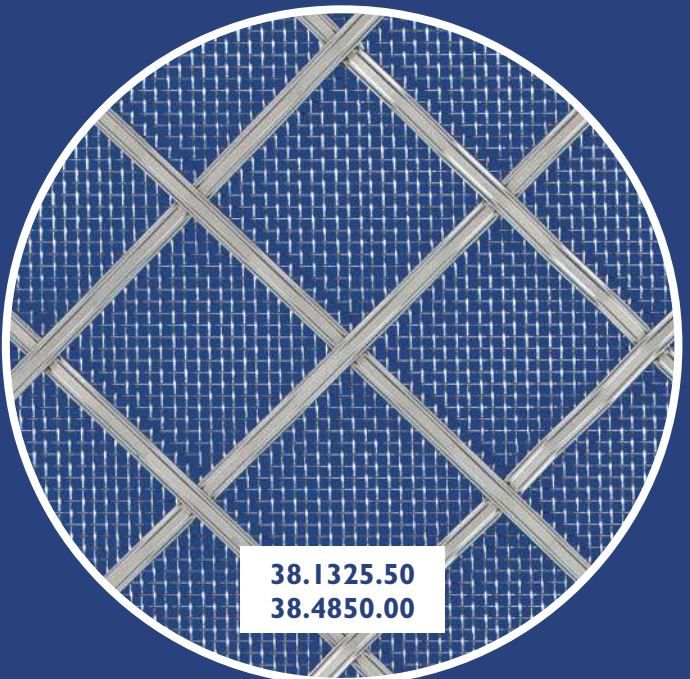
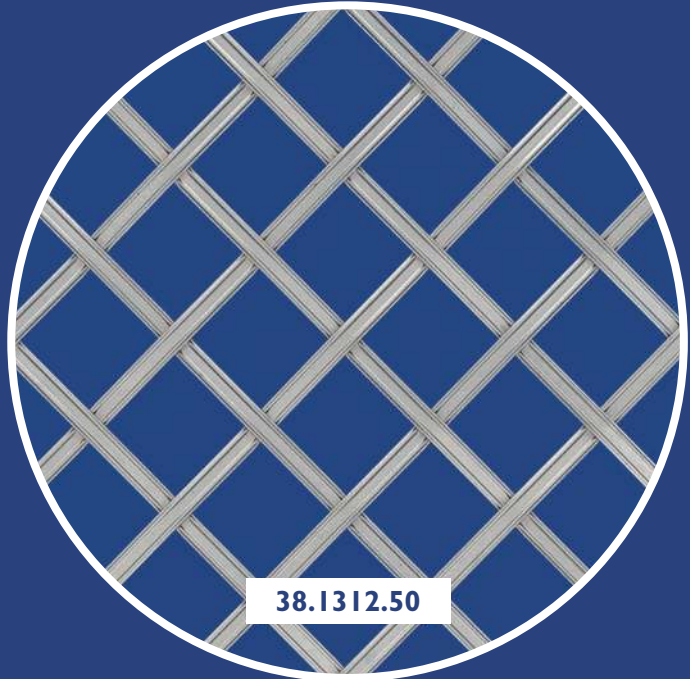
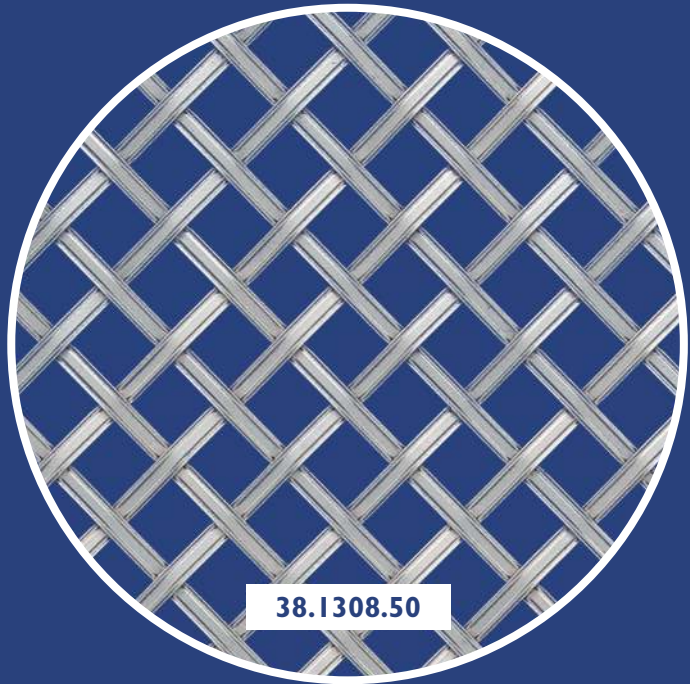
**diamond aperture**

38.1308.50	8mm	5/16"
38.1310.50	10mm	3/8"
38.1312.50	12mm	1/2"
38.1320.50	19mm	3/4"
38.1325.50	25mm	1"

**all above grilles are available  
with or without fine  
stainless steel mesh.**

**38.4850.00 stainless steel mesh  
attached to woven grille.**

all grilles shown actual size



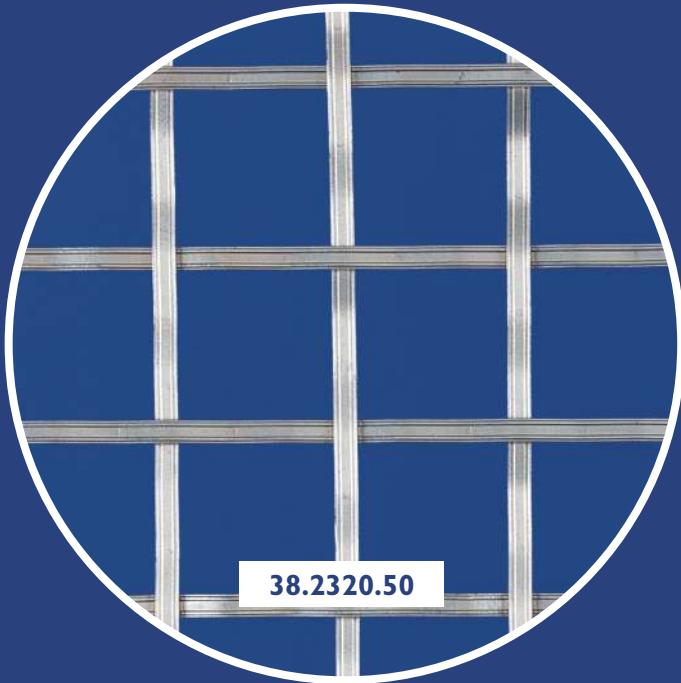
**DANICO**  
020 7483 4477

stainless steel  
woven  
**grilles**

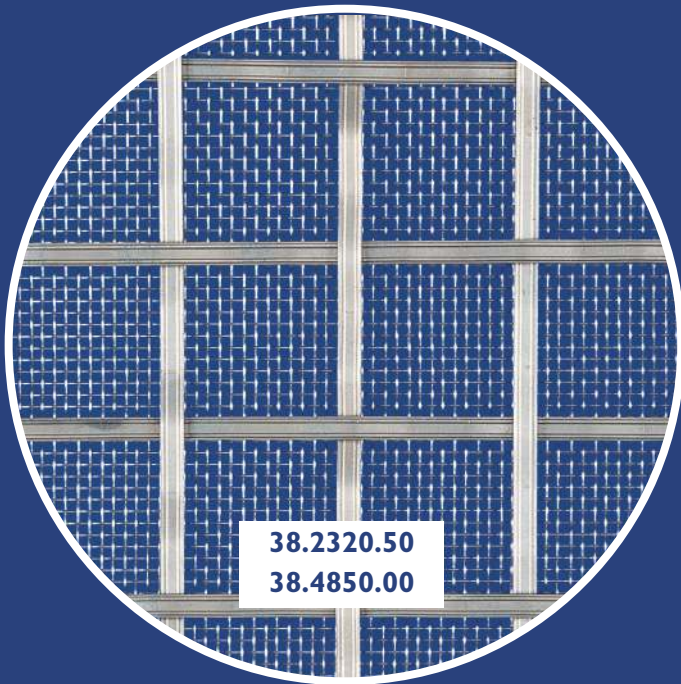
square weave



38.2310.50



38.2320.50



38.2320.50

38.4850.00

**3mm (1/8") wire**

plain one side reeded other side

square aperture

38.2308.50	8mm	5/16"
38.2310.50	10mm	3/8"
38.2312.50	12mm	1/2"
38.2320.50	19mm	3/4"
38.2325.50	25mm	1"

**all above grilles are available with or without fine stainless steel mesh.**

**38.4850.00 stainless steel mesh attached to woven grille.**

all grilles shown actual size

**DANICO**  
020 7483 4477

# framed ■ grilles

## brass linear grille

Brass linear grilles are made to order to suit your aperture sizes. They can be used for heating or air-conditioning installations.



The frame on our standard version is made from 3/4"x3/4"x 1/8" (19x19x3mm) brass angle - which is mitred, brazed, and polished. The linear slats, usually spaced 3/8" (10mm) apart - are supported at each end with threaded rod and spacers. The slats are made from 1/2" x 1/4" (12 x 6mm) solid brass rectangular section.

Distance between Slats can be varied to suit any requirement.

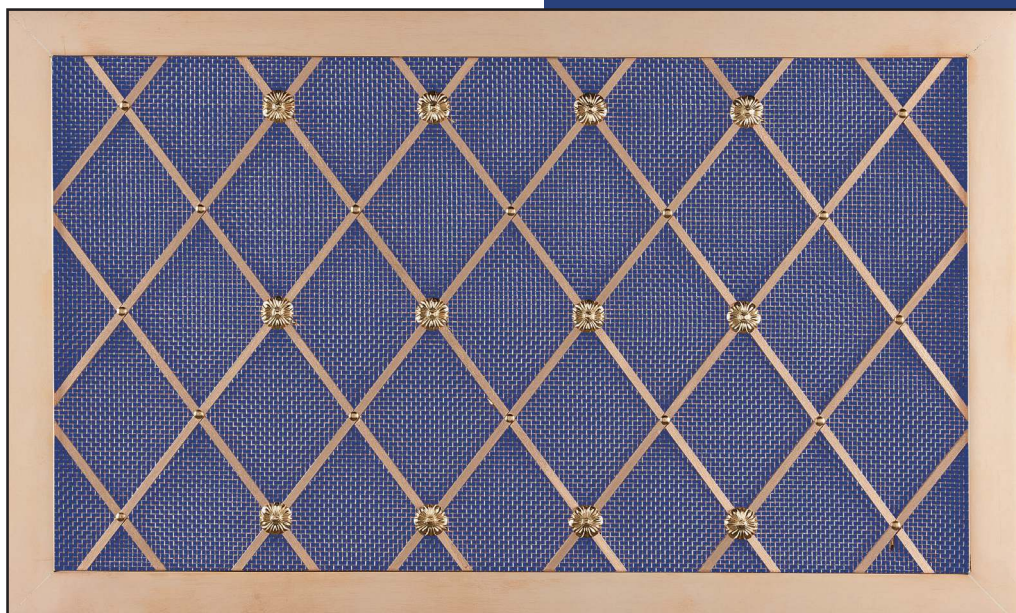
The standard finish is Polished Brass Lacquered.

Linear grilles can also be used on

floors, but may require additional supports depending on the aperture width and traffic. Please discuss with our sales office before ordering.

We recommend floor grilles are finished Polished Brass Un-Lacquered

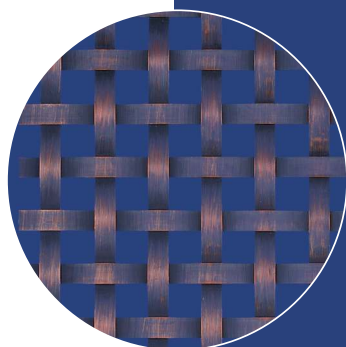
## brass tee frame



Brass Tee Frames are made to order to suit your aperture sizes. These can be used for heating or air-conditioning installations. Frames are made from 3/4"x 3/4"x 1/8" (19x19x3mm) brass Tee section which is mitred, brazed and polished. Any grille of your choice can be mounted in the frame. The model illustrated shows our grille pattern 38.5704.10.12

Tee frames are usually placed in an aperture, cut into the top of radiator cabinets. Not suitable for floors.

The standard finish is Polished Brass Lacquered or Polished Chrome.



A sample of brass square woven grille no 38.2610 shown in IBMA finish. (Imitation bronze metal antique )

**DANICO**  
020 7483 4477

20

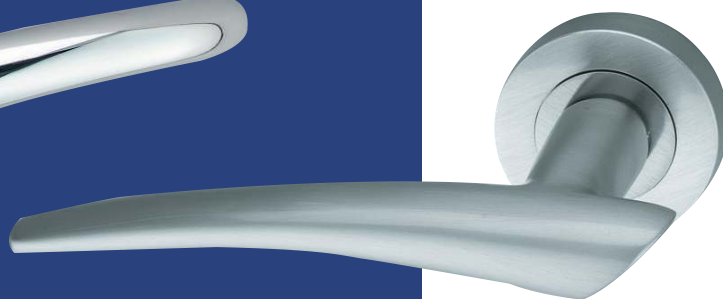
Note all items on this page are not shown actual size.

a selection of  
other products

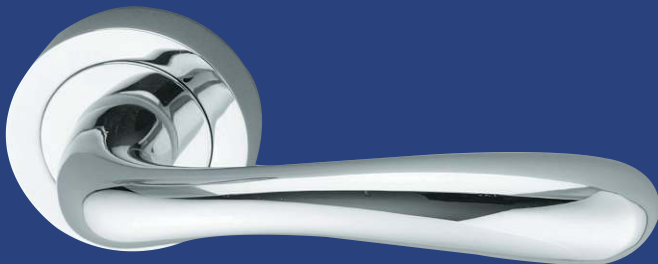
A small selection of other products from a very large range of Architectural Ironmongery and Electrical Accessories



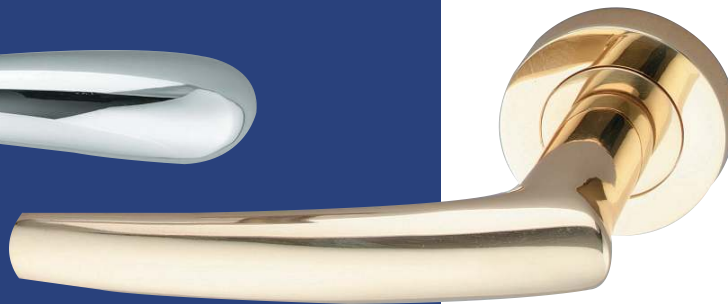
40.7229.20



40.7225.41



40.7228.20



40.7226.10



909.031.20



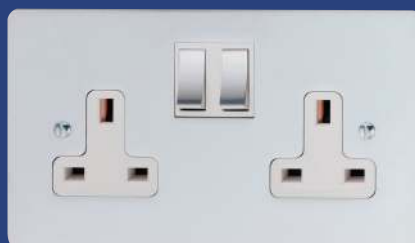
909.032.10



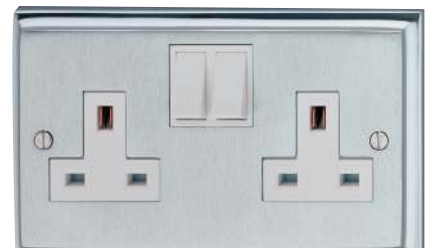
901.011.10



906.012.10



906.032.21



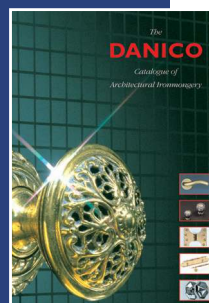
922.092.22

For further information or advice on Architectural Ironmongery - Electrical Accessories - Bathroom Accessories and Taps - please contact our sales office.

Tel: 020 7483 4477 Fax: 020 7722 7992

email: sales@danico.co.uk

Architectural Ironmongery catalogue available on request:



**DANICO**  
020 7483 4477

